

Instruction Sheet

Subject: FreshBlender Ice Removal Chute

SCOPE: ALL MULTIPLEX FRESHBLENDERS

PARTS REQUIRED

- 020007990 Ice Removal Chute Kit

Ice Removal Chute is used to safely move ice from the machine to a clean bucket for Ice Maker Sanitation, Ice Maker Descale and to test Ice Maker Motor in Service Outputs.



FIGURE 1 - Ice Removal Chute

Caution

Do not leave machine unattended when performing ice removal.

Preparation

1. Set Ice Removal Chute aside. (See Figure 1)

Installation

2. Place ice removal chute into the dispense area. (See Figure 2)

NOTE: Keep door closed and locked to ensure chute is locked into position.

3. Line up top of ice removal chute with dispense assembly. (See Figure 3)

4. Place clean bucket under bottom of ice removal chute. (See Figure 4)

NOTE: Position bucket close to end of chute to prevent spills.



FIGURE 2 - Position Chute

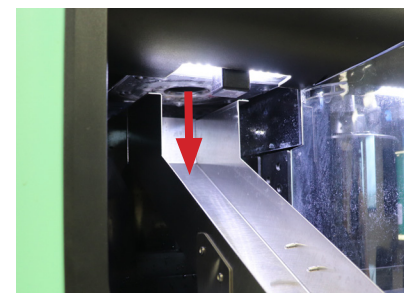


FIGURE 3 - Verify Position



FIGURE 4 - Place Bucket