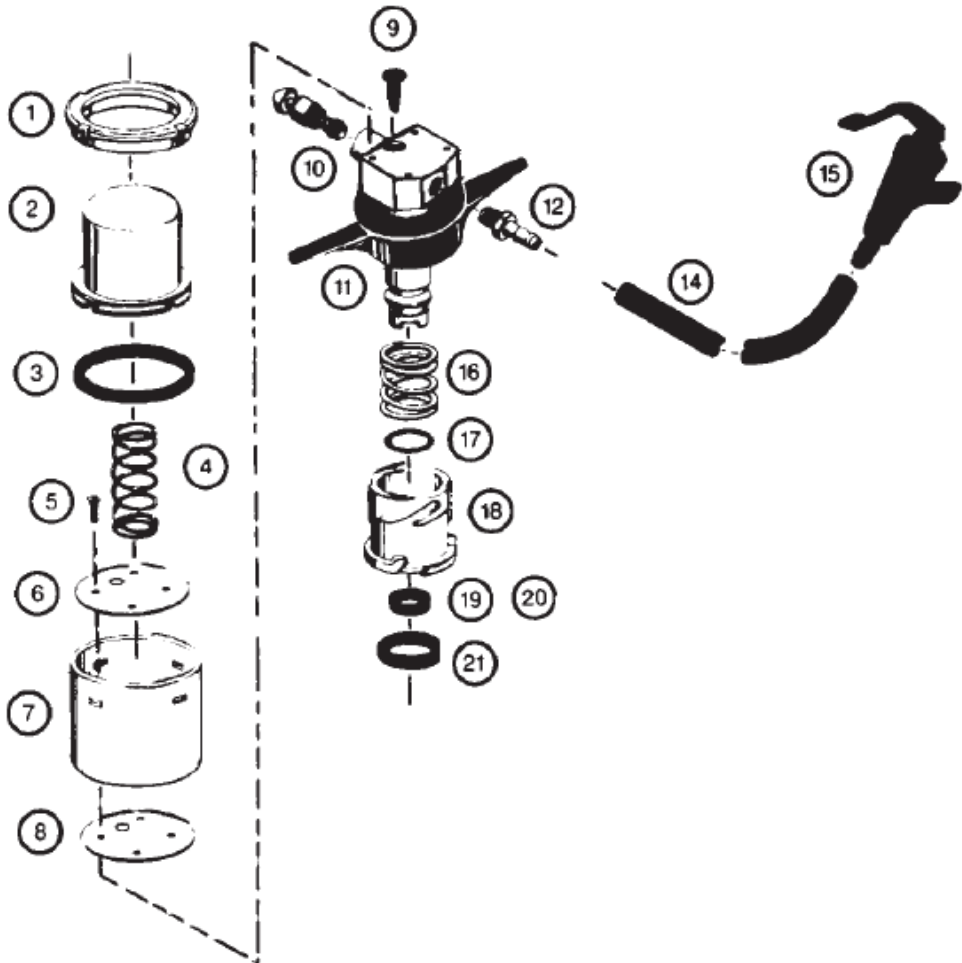


PICNIC PUMP PARTS



Parts for Picnic Pumps with Single Valve Taps

- | | | |
|-----|-----------|-------------------------------|
| 1 | FT40-6 | Cap |
| 2 | FT40-5N | Plunger |
| 3 | FT40-11 | Q-Ring |
| 4 | FT40-9N | Spring |
| 6 | FT40-8-1 | Inside Plate |
| 7 | FT40-7N | Pump Body |
| 8 | FT40-8 | Plate |
| 9 | FT40-4 | Duck Bill |
| 10 | FT-40-19 | Relief Ass'y |
| 11 | FT-40-2A | Probe and Handle Ass'y |
| 11A | FT-40-2EA | Europ'n probe and Handle Assy |
| 12 | 1778-2P | Nipple |
| 14 | PVC-6BIk | 4 FT. hose |
| 15 | 7990 | Plastic Faucet |
| 16 | FT-40-14 | Spring |
| 17 | FT84-2J | Body O-ring |
| 19 | FT40-15 | Probe Washer |
| 20 | FT84-2FE | European Probe Washer |
| 21 | FT84-2A | Body Washer |

