

Instruction Sheet

Subject: FreshBlender Duckbill Valve Replacement

SCOPE: ALL MULTIPLEX FreshBlenders

TOOLS REQUIRED

- Phillips Driver (Recommended Magnetic)
- Needle Nose Pliers
- Clean Towels

PARTS REQUIRED

- WBL-96-060-FRU Duckbill Valve Kit (2 pieces)
-- OR --
- WBL-96-060B-FRU Duckbill Valve Kit (16 pieces)

Important

Keep refrigeration cabinet door closed as much as possible so product remains chilled.

Preparation

1. Set new Duckbill Valve aside. (See Figure 1)
2. Unlock front of machine. (See Figure 2)

Disassembly

3. Remove valve assembly
 - A. Open bottom door.
 - B. Push product latch down. (See Figure 3)
 - C. Place towels under valve assembly to collect syrup. Remove product tray and set aside in refrigerated area. (See Figure 3)
 - D. Remove two large screws. (See Figure 4)

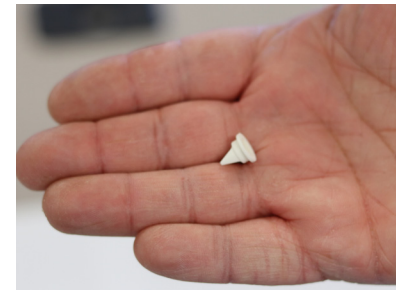


FIGURE 1 - Parts



FIGURE 2 - Unlock Panel

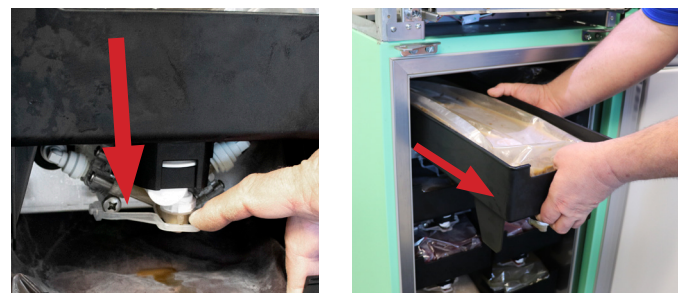


FIGURE 3 - Remove Product Tray

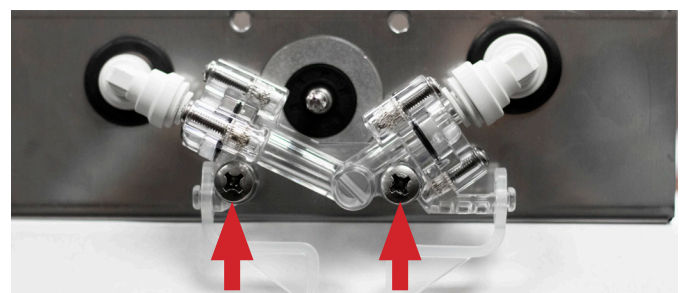


FIGURE 4 - Remove 2 Screws

Disassembly continued

- E. Gently pull valve assembly forward to access the water and product lines. (See Figure 5)
- F. Gently disconnect water and product lines from assembly. (See Figure 5)
- G. Set valve assembly aside.
- H. Close refrigerated product cabinet door.

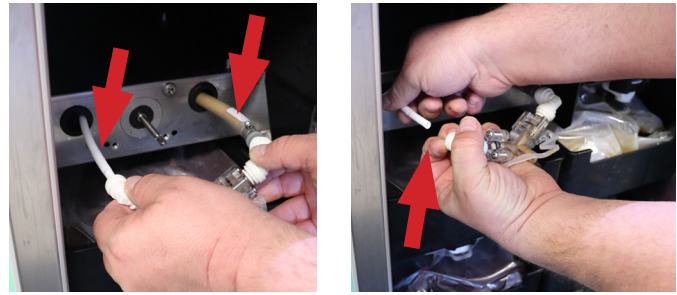


FIGURE 5 - Disconnect water and product lines

Installation

- 4. Locate side of assembly of Duckbill Valve requiring replacement. Remove 3 screws. (See figure 6)
- 5. Pull apart assembly being careful not to lose parts. Record which direction the Duckbill Valve is currently installed. (See figure 7)
- 6. Remove old Duckbill Valve. (See figure 7)

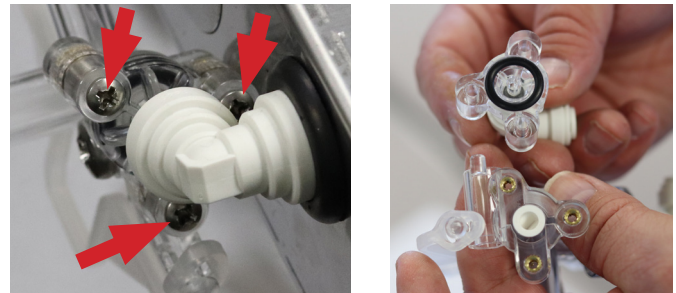


FIGURE 6 - Remove screws and pull apart

Reassembly

- 7. Install new Duckbill Valve. Be sure it is installed in correct direction. Be careful not to puncture new valve.
- 8. Put valve assembly back together and replace 3 screws.

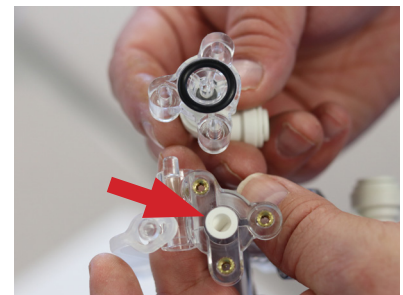


FIGURE 7 - Locate Duckbill Valve

⚠ Caution

Too much applied pressure may crack valve assembly.

- 9. Open refrigerated product door.
- 10. Reconnect water and product lines to valve assembly.
- 11. Install two screws in valve assembly to attach to product tray holder.
- 12. Return product in tray.
- 13. Connect product bag and snap plastic lever into place.
- 14. Remove towels.
- 15. Close product door.
- 16. Lock machine cabinet.
- 17. Test.
- 18. Unlock cabinet door. Open product door. Inspect for leaks and repair if necessary.
- 19. Close product door.
- 20. Lock machine cabinet.