

Instruction Sheet

Subject: FreshBlender Virtual Keyboard

SCOPE: ALL MULTIPLY FreshBlenders

Preparation

1. Clean touchscreen if dirty.
 - A. Turn OFF machine.
 - B. Clean screen with approved cleaner.
 - C. Turn ON machine.

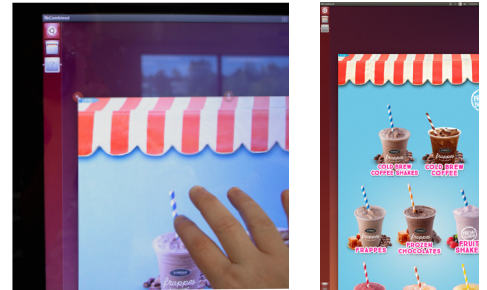


FIGURE 1 - Linux Desktop

Instruction

1. Open Activities overview.
 - A. From the home screen, using three fingers, press the screen firmly dragging to the right a few inches and then release. (See Figure 1)

NOTE: If screen does not drag, cycle machine OFF/ON.

- B. Linux Desktop interface will be revealed.
- C. Locate Activities Overview icon in top left corner and select with finger. (See Figure 2)

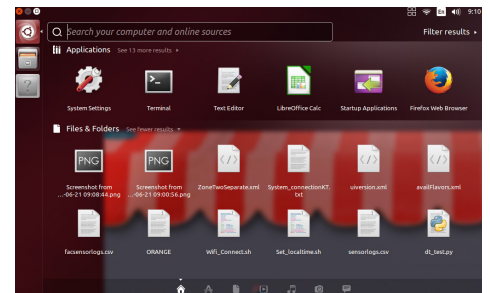


FIGURE 2 - Activities Overview Icon

2. Select "System Settings". (See Figure 3)
3. Select "Universal Access". (See Figure 3)
4. Under Universal Access window, select the "Typing" tab. (See Figure 4)
5. Turn the screen keyboard option ON by selecting the "ON/OFF" icon. (See Figure 4)
6. Close Universal Access window by pressing red X in top left corner.

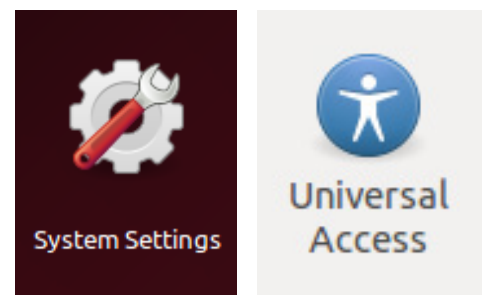


FIGURE 3 - Select Options

NOTE: You will not see an immediate change. Must cycle the machine OFF/ON for changes to take effect. The keyboard will only appear when keyboard entries are available.

7. Cycle Machine OFF/ON.
8. Open Linux Desktop again by pressing three fingers on screen, dragging to the right and releasing.

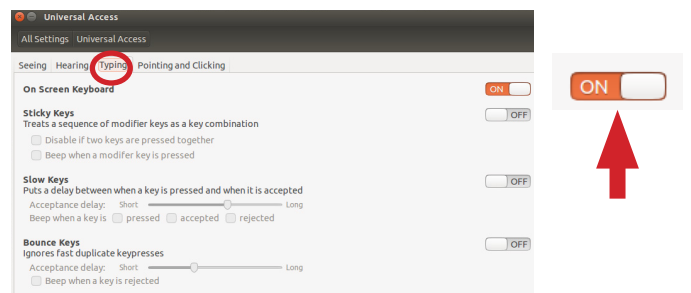


FIGURE 4 - Typing Tab, Turn Keyboard ON

9. Press the Activities Overview icon. Tap inside the search bar located at the top of the window. The keyboard will appear. (See Figure 5)

10. If the keyboard does not appear select the 4 Squares icon at the top of the screen. (See Figure 6)

A. Select "On Board" from the drop down menu.

NOTE: If you select the QUIT option, you will need to cycle the machine OFF/ON to access the 4 Squares icon again.

B. Under preferences check both the Auto Show and the Start Hidden options.

C. Press Close button in bottom right corner of window.

D. Press the Activities Overview icon. Tap inside the search bar located at the top of the window. The keyboard will appear.

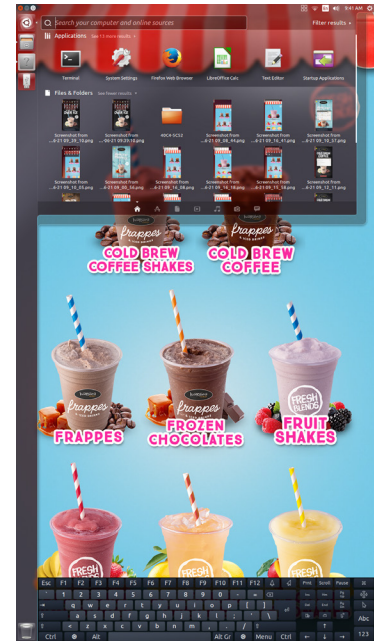


FIGURE 5 - Virtual Keyboard

11. When the keyboard is visible it can be repositioned on the screen. (See Figure 7)

A. Locate the move button on the left side of the keyboard that looks like a cross with arrows.

B. Press and drag the move button. Release the button when finished positioning keyboard.

NOTE: Press X button on top right of keyboard to hide. Keyboard will reappear when keyboard entries are available. (See Figure 7)

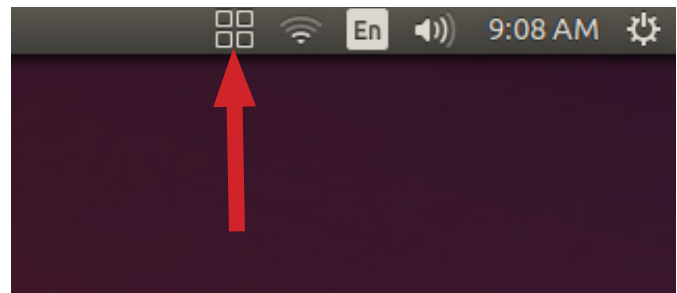


FIGURE 6 - 4 Squares Icon

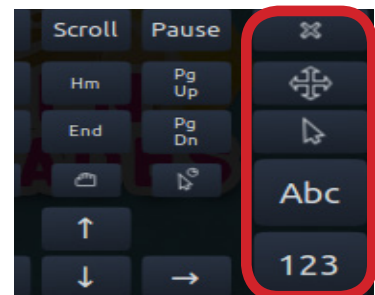


FIGURE 7 - Keyboard Buttons